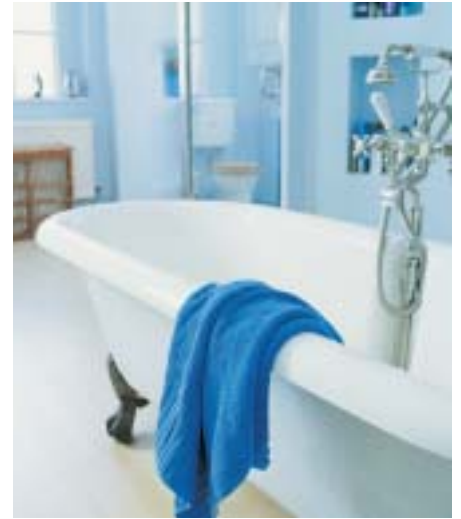


VPA

WATER HEATER, HEAT PUMP ACCUMULATOR



General

VPA is a series of accumulator tanks primarily intended for connection to heat pumps. They are also suitable for use with other heat sources. They are available in three sizes, 200/70, 300/200 and 450/150.

Design

The accumulator tanks consist of a hot water tank and a surrounding, double walled sheet steel jacket. The water tanks are lined with copper to prevent corrosion.

The accumulator tanks are designed and manufactured in accordance with current pressure vessel standards (PED 97/23 EC § 3.3) for a maximum working pressure in the water tank of 9 bar (0.9 MPa), which is the equivalent to a design pressure of 10 bar (1.0 MPa). The maximum working pressure in the outer jacket is 1.5 bar (0.15 MPa) for the VPA 200/70 and VPA 300/200, and 2.5 bar for the VPA 450/150. Maximum permitted temperature is 100°C.

The water tank is insulated with seamless polyurethane, which provides excellent heat insulation.

The VPA is equipped with a connection for an immersion heater heating element outlet and a pocket tube for sensor for control of water heating.

The outer shell of the VPA 200/70 is powder-coated, white steel. The outer shell of the VPA 300/200 and VPA 450/150 is white, plastic-coated metal.

Installation

The accumulator tank is installed upright. Align the tank using the four adjustable feet (applies to the VPA 200/70).

The cold water pipe must be fitted with the necessary valve equipment in accordance with current norms and directives.

A mixer valve must be fitted if the accumulator tanks are to be heated to more than 65°C.

Double-jacketed
water heater
Heat pump accumulators

200 / 70
300 / 200
450 / 150

The advantages of VPA

effective,
pro-environmental insulation

quick and simple
to install

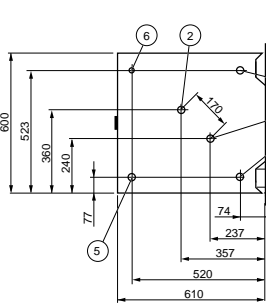
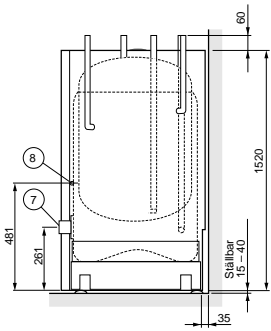
best performance
and safety



Comfort
from Sweden

Dimensions, equipment and pressure drop diagram

VPA 200/70

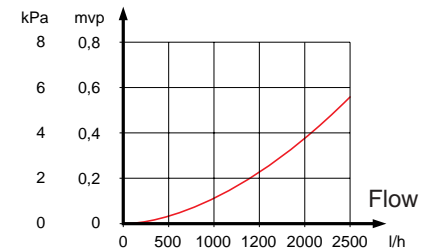


- 1 Cold water inlet, \varnothing 28 mm
- 2 Hot water outlet, \varnothing 28 mm
- 3 Docking connection, supply pipe (from heat pump), \varnothing 28 mm.
- 4 Docking connection, pipe to heat pump/radiator return, \varnothing 28 mm.
- 5 Supply pipe to radiators, \varnothing 28 mm
- 6 Venting, double-jacketed container.
- 7 Immersion heater connection, G 50 int.
- 8 Pocket tube for sensor (int. \varnothing 8 mm, length: 85 mm), water heating control

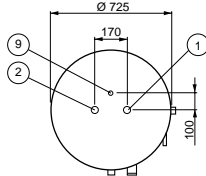
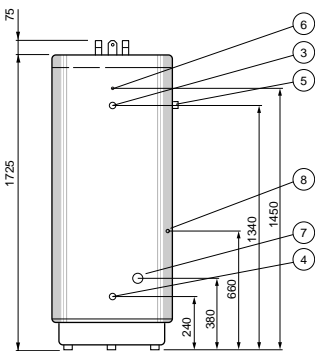
Primary side

Connection (3) and (4).

Pressure drop



VPA 300/200

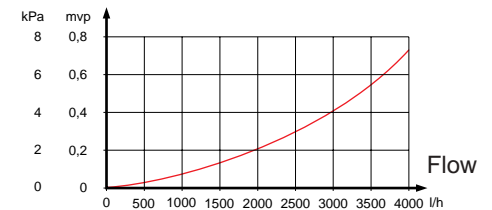


- 1 Cold water inlet, \varnothing 28 mm.
- 2 Hot water outlet, \varnothing 28 mm.
- 3 Docking connection, supply pipe from heat pump, G 40 int.
- 4 Docking connection, pipe to heat pump, G 40 int.
- 5 Docking connection, supply pipe to radiator, G 40 int.
- 6 Venting, double-jacketed container, G 6 int.
- 7 Immersion heater connection, G 50 int.
- 8 Pocket tube for sensor (int. \varnothing 11 mm, length: 228 mm), water heating control.
- 9 HWC connection, \varnothing 15 mm.

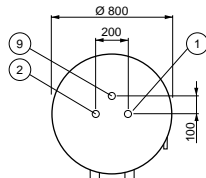
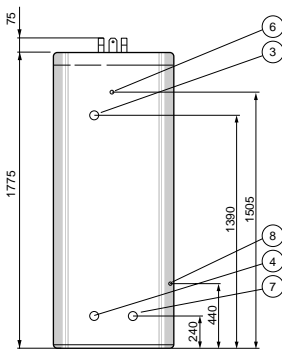
Primary side

Connection (3) and (4).

Pressure drop



VPA 450/150

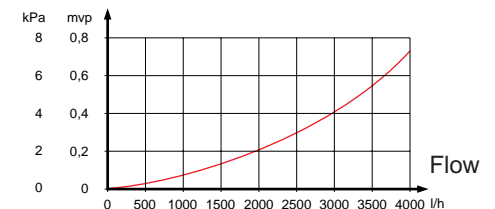


- 1 Cold water inlet, \varnothing 35 mm
- 2 Hot water outlet, \varnothing 35 mm
- 3 Docking connection, supply pipe from heat pump, G 40 int.
- 4 Docking connection, pipe to heat pump, G 40 int.
- 6 Venting, double-jacketed container, G 6 int.
- 7 Immersion heater connection, G 50 int.
- 8 Pocket tube for sensor (int. \varnothing 11 mm, length: 300 mm), water heating control
- 9 HWC connection, \varnothing 22 mm

Primary side

Connection (3) and (4).

Pressure drop



Technical specifications

Product	VPA	200/70	300/200	450/150
Volume	(litres)	205	285	435
Volume, jacket space	(litres)	66	194	145
Net weight	(kg)	150	180	225
Heat transfer (55/45 – 10/45°C)	(kW)	8.2	10.0	14.1
Heat content at 50 °C	(kWh)	9.0	12.5	19.1
Max. immersion heater length	(mm)	540	580	640
Pressure vessel	PED 97/23 EC § 3.3			

We reserve the right to make changes in design and dimensions without prior notice.

NIBE AB
Sweden

Box 14
Järnvägsgatan 40
SE-285 21 MARKARYD

Tel: +46 - (0)433-73 000
Fax: +46 - (0)433-73 190

www.nibe.com

